

The New Ohio Dragonfly Survey



Southern Pygmy Clubtail, *Lanthus vernalis*

Bob Glotzhober (reared)

The New Ohio Dragonfly Survey

Adding Data to the Survey

Ohio Dragonfly Survey 2017 - 2019

Goals:

- To identify every species known for every county
- To identify species introduced/established since the original survey (1991 – 2002)
- To identify changes in distribution and abundance since the original survey
- To identify the status of rare species & recommend updates to State Listed species

Topics

- **Advantages of Photographic Records**
- **Disadvantages of Photographic Records**
- **Advantages of Permanent Museum Specimens**
- **Disadvantages of Museum Collection**

continued

Topics (continued)

- Physical Collection Protocols
- Photographic Collections Protocols *iNaturalist*
- Helpful Aids

Advantages of Photographic Records

- **Wide availability of quality digital photography**
= Lots of photographers available.
- **Ability to take multiple images in field & sort later**
- **Abundance of photographic/illustration field guides**
- **Generally no special permits required**
(aside from entry or perhaps off-trail access)
- **Minimal, low impact on populations**
- **Kids -- ?**

Disadvantages of Photographic Records

- Many species do not lend themselves to easy photography but may be easy to catch
- Photos may not catch all views needed for ID
- Naming of a new species, or splitting of an existing species may be impossible from photos
Often requires measurements, sometimes even for ID.
- Study of small structures, or ecto parasites not possible
- We don't really know how long digital photo will survive: electronic degradation; change of format; etc.

Advantages of Permanent Museum Specimens

- Most of disadvantages of photos do not apply
- Comparison with numerous specimens for ID possible;
Can see individual variations
- Small tissue samples can be used for DNA studies
- Study of trace elements (strontium etc.)
may reveal natal habitat of an adult, etc., etc.
- Permanent voucher of presence at a time and place;
OOS database records from 1888, 1895, 1897 etc.

Disadvantages of Physical Collections

- Typically requires special permits;
Some parks, etc. hesitant to permit collecting
- Does have a small impact on populations

Odonata Reproductive Potential

Tiger Spiketail = Up to 370 thrusts/event

Adult Life = to 34 da

IF Ovoposit every other day/10 days = 3,000 eggs

Arrowhead Spiketail – 6/7/2016 = 453 thrusts

Common Baskettail (*Epitheca cynosura*)

1,000 – 2,000 eggs per “basket”

Blue Dasher (*Pachydiplax longipennis*)

deposit 300 – 700 eggs in 35 seconds

We *NEED BOTH*

Physical Collections,
and

Photographic Collections!

Protocols for Physical Collections



Physical Collections

- **Be certain to have permits from managing agencies.**
Some museums require copies, especially for Listed Species.
- **Record with specimen of all collection data (*see handout*).**
- **Submit all specimens to your Regional Coordinator, (who will submit them to an approved, Ohio, permanent, public museum. (*see handout*).**
- **Submit duplicate copies of all data to both the museum and to Project Coordinator & Data Entry.**
- **Notify MaLisa Spring & Bob Glotzhober immediately if collect, photo or observe Hine's Emerald.**

Stylurus plagiatus
Russet-tipped Clubtail

1 ♂

"Tetanus Beach" – East bank of Great Miami Rv
Below Fairfield Water Treatment Plant
(south of Joyce Park Access via Grt. Miami Rv. Bike Trail)
Caught on Vegetation along gravel bar.

Butler Co. Fairfield Twp., Fairfield, Ohio

NEW CO. RECORD

Sept. 2010 ~1100 hours. Apx. 70s° F

Mike Busam

OOS 29183

N42788

Envelopes = BioQuip.com \$5.45/100 polypropylene

Printable 3x5 Cards: Avery, White Index Cards 5388
On-line Template 5388

Storage Options =

- Special boxes
- Open topped insect drawers
- Tight Plastic 3x5 Card Boxes



Photographic Collections – Using iNaturalist

Go To: <http://www.inaturalist.org/>



Greg Lasley - Snowy E

Navigation icons: User, Minimize, Maximize, Close

Star icon and menu icon

Other bookmarks

Log in or Sign up



1

2

3

Regarding “*User Name*”

We need full names for our database!

You may use whatever user name you wish to protect your online security, but send your

- user name and your
- full, real name and
- your e-mail

to both:

Project Coordinator:

MaLisa Spring (Malisa.spring@gmail.com) and

Data Manager:

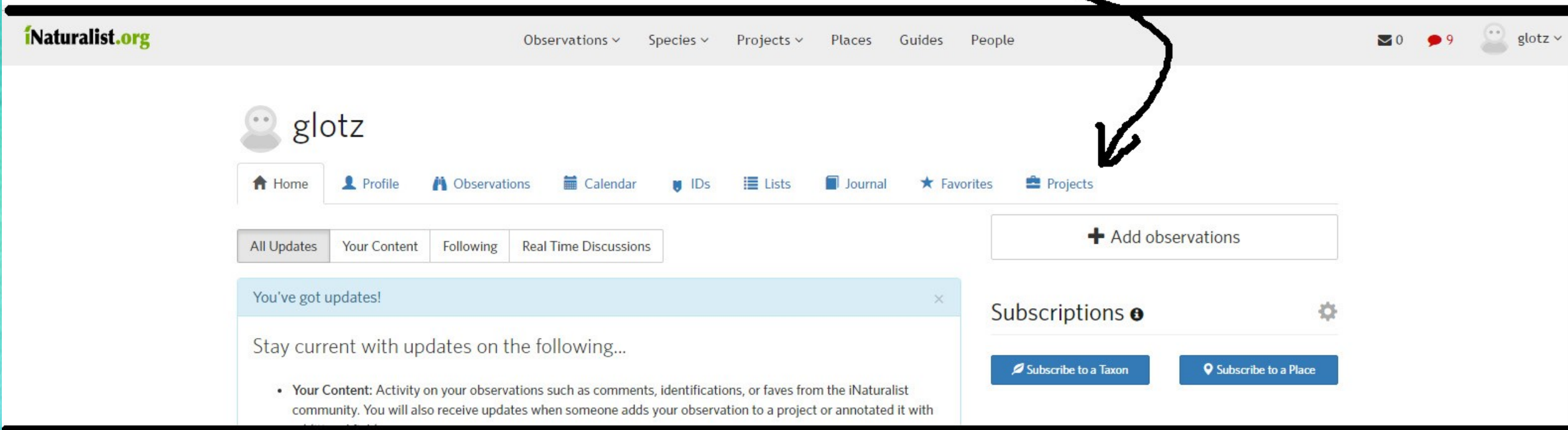
Jim Lemon (jlem@woh.rr.com)

Instructions for submitting Photo Records to *iNaturalist* for Ohio Odonata

Go to: <http://www.inaturalist.org/>

1. Login, or if new to *iNaturalist*, Create an account, then login

2. After Login --- to to "Projects"
Click on Projects



The screenshot shows the iNaturalist.org website interface. At the top, the navigation bar includes links for Observations, Species, Projects, Places, Guides, and People. The user profile for 'glotz' is displayed, with a navigation menu containing Home, Profile, Observations, Calendar, IDs, Lists, Journal, Favorites, and Projects. A hand-drawn arrow points from the 'Projects' link in the user profile menu to the 'Projects' link in the top navigation bar. Below the navigation menu, there are tabs for 'All Updates', 'Your Content', 'Following', and 'Real Time Discussions'. A notification box states 'You've got updates!' and 'Stay current with updates on the following...'. To the right, there is a '+ Add observations' button and a 'Subscriptions' section with buttons for 'Subscribe to a Taxon' and 'Subscribe to a Place'.

3. Select or Search for "Ohio Odonata Survey"

Ohio Dragonfly Survey

Ohio Odonata Society – Project Home Page

Observations ▾ Species ▾ Projects ▾ Places Guides People

« Projects



Ohio Odonata Survey

[Terms & Rules](#) | [Edit project](#)

[Add observations to this project](#)

Stats

Totals

1239

Observations »

96

Species »

7

People »

Most Observations



srmyers
855 observations



smpvoluntee
200 observations



jimlem
83 observations



vicfazio3
46 observations



lindyloo
38 observations

Most Species



23 species



smpvolunteer-jcannon
23 species

Most Observed Species



53 observations



Blue-fronted Dancer
50 observations

[Terms & Rules](#) | [Edit project](#)

[Add observations to this project](#)

Terms

- Entries must be photos of dragonflies or damselflies taken in Ohio
- Photos must be identifiable to species.
Often 2 or 3 shots show key details such as in field guides are extremely helpful.
- Entries must carry scientific level of data.
 - name of photographer
 - date photo taken
 - location as precise as possible.

Continued



Photo Records Must include:

- **County (township if possible)**
- **Site name or description to help pin location**
(can be simple like "State Route 56 at Mad River" or "backyard in Athens, Ohio" or "Big Walnut Creek at confluence with Alum Creek" or something else that will enable to site to located.)
- **GPS coordinates strongly desired. These can usually be selected from the map photo that appears when you enter your data.**

Continued



- Photos will be vetted and accepted/rejected from the project based upon
 - a) complete data;
 - b) identifiable photo
- Common names and scientific names should be used from Paulson's "Dragonflies and Damselflies of the East".

Typically filled in automatically once you enter the accepted common name.

Upload your Photos

[Observations](#) ▾ [Species](#) ▾ [Projects](#) ▾ [Places](#) [Guides](#) [People](#)

[« Projects](#)



Ohio Odonata Survey

[Terms & Rules](#) | [Edit project](#)

[Add observations to this project](#)

Stats

Totals

1239

Observations »

96

Species »

7

People »

Most Observations



srmeyers
855 observations



smpvolunteer-jcannon
200 observations



jimlem
83 observations



vicfazio3
46 observations



lindyloo
38 observations

Most Species



jimlem
70 species



srmeyers
63 species



lindyloo
26 species



vicfazio3
23 species



smpvolunteer-jcannon
23 species

Most Observed Species



Blue Dasher
59 observations



Eastern Forktail
59 observations



Eastern Pondhawk
56 observations



Fragile Forktail
53 observations



Blue-fronted Dancer
50 observations

Add an observation to



Ohio Odonata

Add: [Batch](#) · [From list](#) · [Import](#) · [From photos](#)

Survey

What did you see?



Was it captive / cultivated? ⓘ

When did you see it?



(GMT-05:00) Eastern Time (US ▾)

e.g. "2017-05-11 15:52:04", yesterday at 4pm

Description

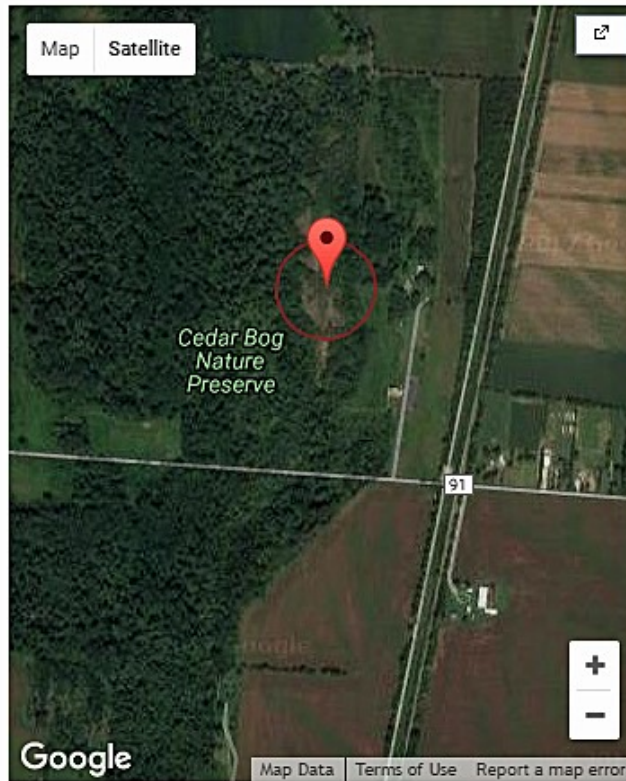
Tags *Comma-separated, please* ⓘ

More fields ⓘ

Where were you?

Name of the place you made the observation

Lat: 40.059122 Lon: -83.793862 [Edit](#)
Acc (m): 101 Src: manual



Change geoprivacy [open](#) ⓘ

Add media

Add photos

Add sounds

Source: [your hard drive](#) ▾

Select one or more photos

[Choose Files](#) No file chosen

Sync obs. w/ photo metadata? [clear](#)

Where were you?

Cedar Bog Nature Preserv

Lat: 40.058859

Acc (m):

Map Satellite

Cedar Bog
Nature
Preserve

Cedar Bog
Nature
Preserve

Cedar Bog
Nature
Preserve

Woodburn Rd

Use "Private" for all State/Federal Listed or rare species!

Google

Google

Change geoprivacy private

Change geoprivacy p

Change geoprivacy private

- Open
- Obscured
- Private

Banded Pennant (*Celithemis fasciata*) · Observed by glotz · July 14, 2016

[Edit](#) [Copy](#) [Delete](#) [Add to favorites](#) [Identify](#) [Add to project](#) [Share](#)



Banded Pennant. Lake Emily, Clear Crk. M. Pk. 7/14/2016 R. C. Glotzhofer. PennantBanded9333



Photo © glotz, some rights reserved
[Add more photos](#)

Location: Lake Emily, Clear Creek Metro Park. Fairfield County, Madison Twp., Ohio. N 39.584 W82.623 (Google, OSM)

Places: Fairfield, US-OH, US Eastern States, US, North America, NA [More...](#)

Lat 39.584, Lon -82.623

*Shown publicly as Lat 39.5771911037, Lon -82.7078436918
Exact coordinates obscured for public view for threatened species.*

Accuracy: 50m

Geoprivacy: [open](#) [Edit](#)

[Hide details](#)

Added: Dec. 12, 2016 17:38:44 -0500

[Add/edit more fields](#)

Your ID: **Banded Pennant** (*Celithemis fasciata*) EN

Community ID: **Banded Pennant** (*Celithemis fasciata*) EN
About

2 people agree

Identotron

Projects

- Ohio BioBlitz ✖
- Lower Lake Erie Region CSI ✖
- Ohio Odonata Survey ✖

Comments & Identifications

Your ID: **Banded Pennant** (*Celithemis fasciata*)

Posted by you 5 months ago

jimjohnson's ID: **Banded Pennant** (*Celithemis fasciata*)

Posted by jimjohnson 5 months ago

View 4 from July 14, 2016 »

Data Quality Assessment ⓘ

Quality grade: **Research** [Details](#)

Comments & Identifications



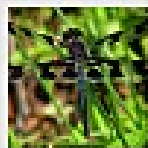
Your ID: **Banded Pennant** (*Celithemis fasciata*)

Posted by [you](#) 5 months ago



[jimjohnson's](#) ID: **Banded Pennant** (*Celithemis fasciata*)

Posted by [jimjohnson](#) 5 months ago



[nlblock's](#) ID: **Banded Pennant** (*Celithemis fasciata*)

Posted by [nlblock](#) 5 months ago

Add a comment

Add an identification

Questions?

Contact:

Bob Glotzhofer, rglotz@twc.com

Jim Lemon, jlem@woh.rr.com

MaLisa Spring, malisa.spring@gmail.com

Helpful Aids

See Handout:

- Helpful References for ID**
- Ohio State Listed Species**
- List of Current Known Ohio Species**

Questions?

Contact:

Bob Glotzhofer, rglotz@twc.com

Jim Lemon, jlem@woh.rr.com

MaLisa Spring, malisa.spring@gmail.com